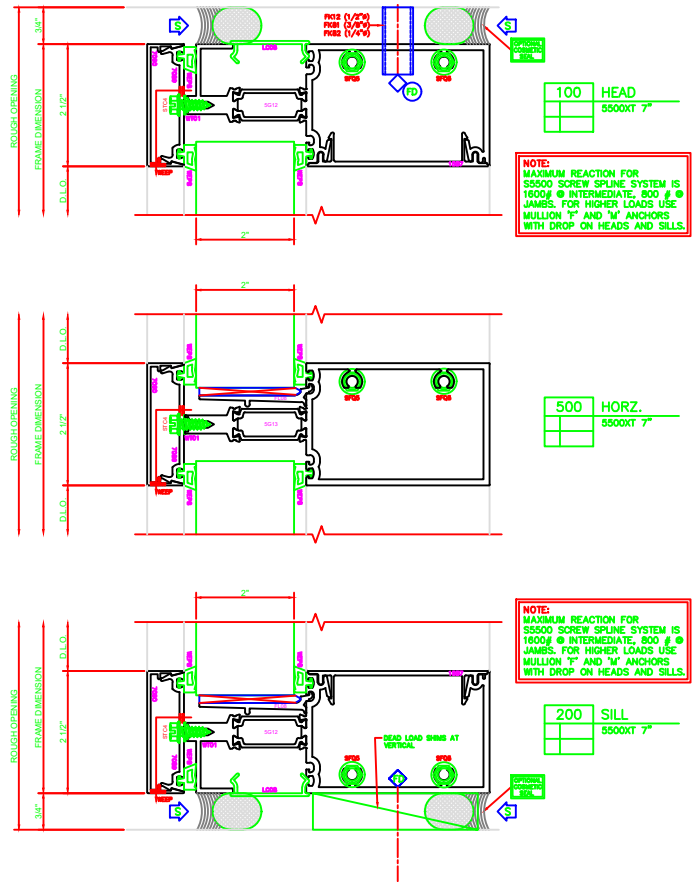


400 JAMB  
5500XT 7"

600 VERT.  
5500XT 7"

601 EXP. VERT.  
5500XT 7"

401 JAMB  
5500XT 7"



100 HEAD  
5500XT 7"

NOTE:  
MAXIMUM REACTION FOR  
55000 SCREW SPLINE SYSTEM IS  
1800# @ INTERMEDIATE, 800 # @  
JAMBS. FOR HIGHER LOADS USE  
MULLION "T" AND "M" ANCHORS  
WITH DROP ON HEADS AND SILLS.

500 HORZ.  
5500XT 7"

NOTE:  
MAXIMUM REACTION FOR  
55000 SCREW SPLINE SYSTEM IS  
1800# @ INTERMEDIATE, 800 # @  
JAMBS. FOR HIGHER LOADS USE  
MULLION "T" AND "M" ANCHORS  
WITH DROP ON HEADS AND SILLS.

200 SILL  
5500XT 7"

DEAD LOAD BIRMS AT  
VERTICAL